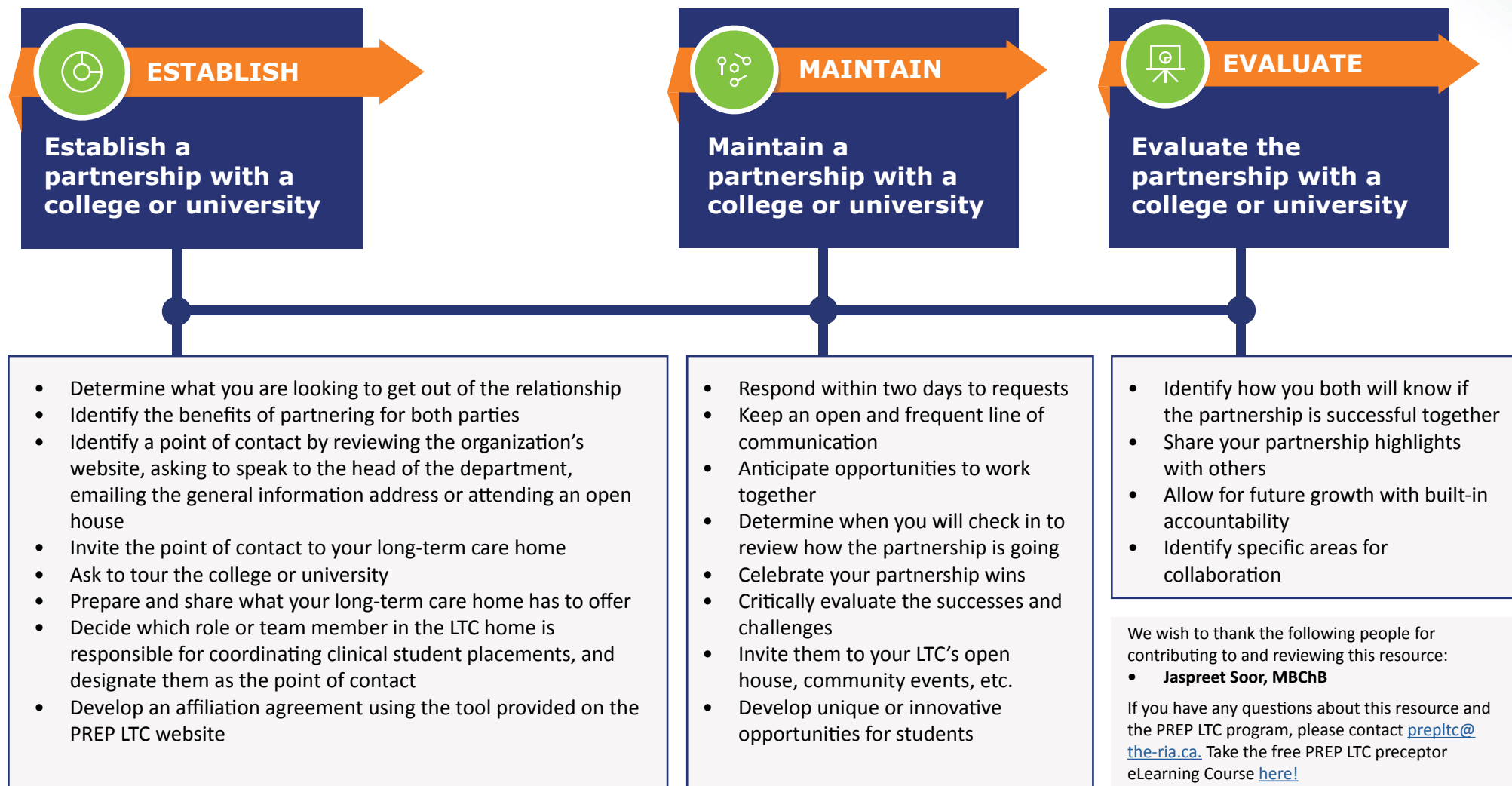


Tips for Long-Term Care Homes:

Partnering with colleges or universities to improve clinical student placements



Acknowledgements

PREP LTC is led by the Ontario Centres for Learning, Research and Innovation in Long-Term Care (CLRI) at the Schlegel-UW Research Institute for Aging in collaboration with the Ontario CLRI teams at Baycrest Health Sciences and Bruyère. The views expressed herein do not necessarily reflect those of the Province.